



# STM32MP157X-DKX - board connections

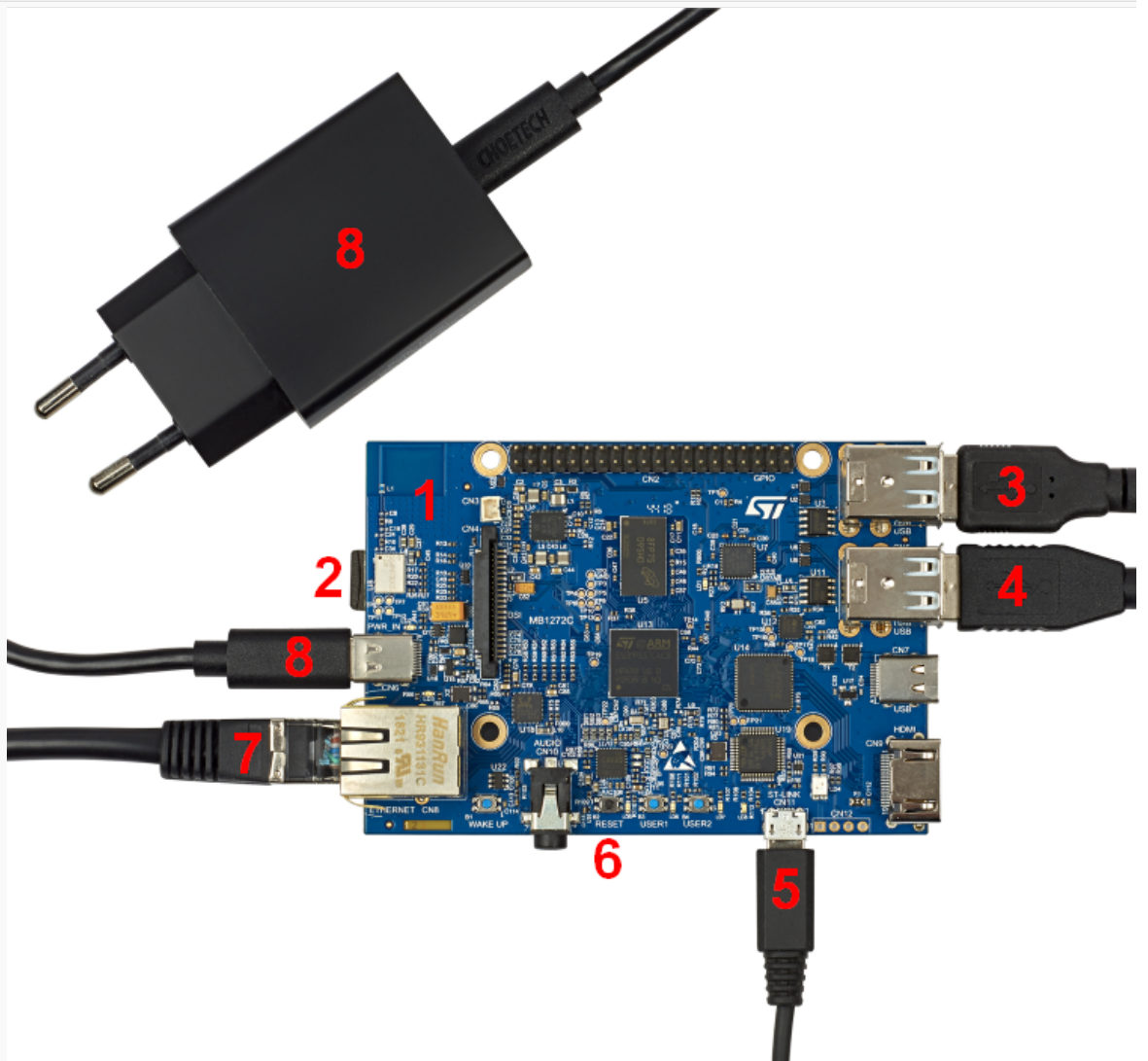
## STM32MP157X-DKX - board connections

Stable: 31.01.2020 - 14:01 / Revision: 31.01.2020 - 13:51

**Template:ArticleApprovedVersion** This article presents the recommended connections to start with the **STM32MP157x-DKx** Discovery kits. It is valid both for the STM32MP157A-DK1 and STM32MP157C-DK2 Discovery kits: the part numbers are specified in the [STM32MP15 microprocessor part numbers article](#).



To successfully start the board, it is recommended to go through the corresponding Starter Package article: [Category:Starter Package](#)



STM32MP157x-DKx Discovery kit connections

**STM32MP157C-DK2** shown here without the MB1407 daughterboard DSI display to avoid hiding the connections (picture