

## Welcome

Stable: 09.10.2019 - 19:32 / Revision: 08.10.2019 - 18:05



### Welcome to the STM32 Arm<sup>®</sup> Cortex<sup>®</sup>-based MPUs user guide!

This user guide aims at assisting developers to use STM32 MPUs microprocessor devices from STMicroelectronics, starting with the **STM32MP1 series**. <sup>[1]</sup>

It contains many articles to discover the **STM32MP1 series** and associated **ecosystems** (STM32 boards, embedded software, development tools, trace & debug tools...).

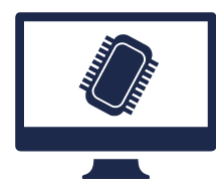


Now, let you drive by links given in the articles, starting with the ones below.



#### Getting started

Be guided **step-by-step** to take a grip on the boards and the ecosystem for the STM32 Arm Cortex-based MPUs



#### Development zone

Go through around 400 articles, regularly updated STM32 Arm Cortex-based MPUs.

This user guide complements the resources available on STMicroelectronics web site for the [STM32 Arm Cortex-based MPUs](#).

It is strongly recommended, before starting browsing this user guide, to go through the [legal notice](#), and the [reading tips](#).

For **communication and support**, you can use [ST Support Center](#) or [ST Community MPU Forum](#).

- 
1. ↑ [\[1\]STM32MP1 series on st.com](#)