



## How to set up proxy and P2P Ethernet connection with STM32CubeIDE

---

### How to set up proxy and P2P Ethernet connection with STM32CubeIDE





---

## 1 Introduction

---

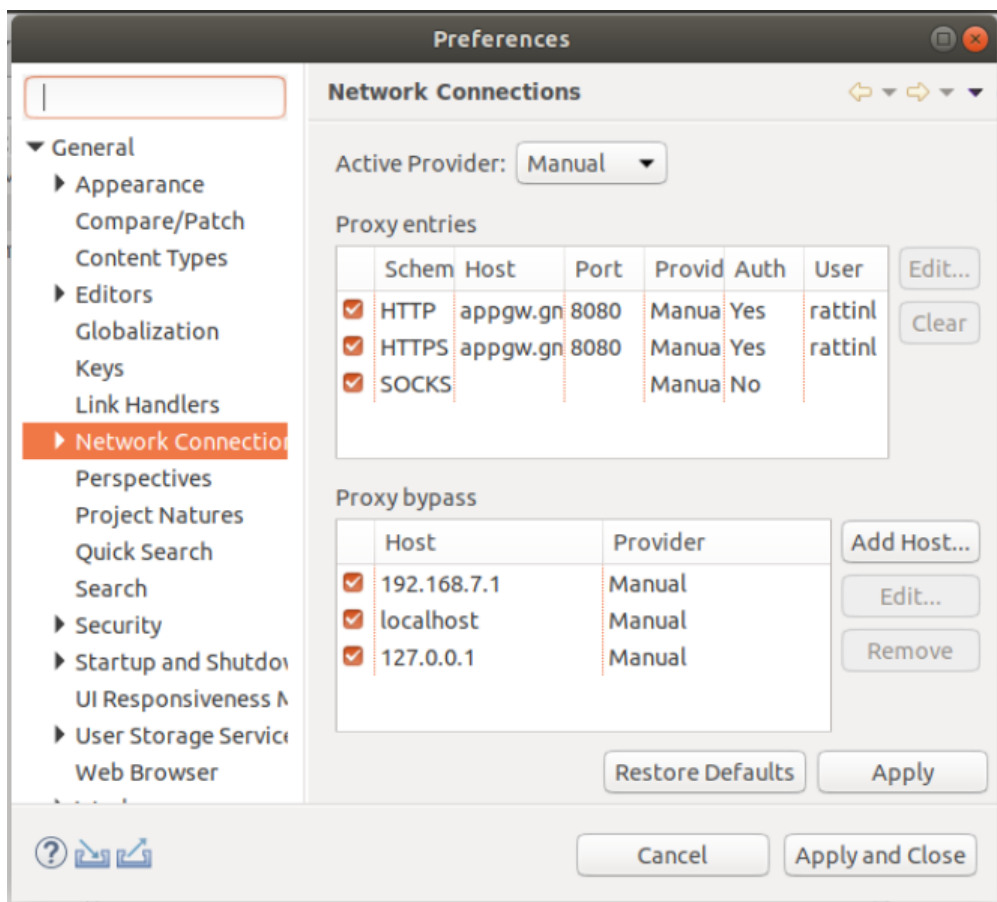
This article explain how to set up a Point-to-Point connection to the STM32 MPU board, especially in case of a proxy is also setup on the PC for accessing the Internet.



## 2 Setting up network

To set up the connection

- go to *Windows -> Preferences -> General -> Network Connections*
- select "Manual" in the *Active Provider* field, and:
  - adjust your proxy setup with *Edit...* in *Proxy entries*
  - configure a new *Proxy bypass* with *Add Host...* giving the IP address of the STM32 MPU target.



Microprocessor Unit