



How to get started with STM32CubeIDE from scratch

How to get started with STM32CubeIDE from scratch



Contents



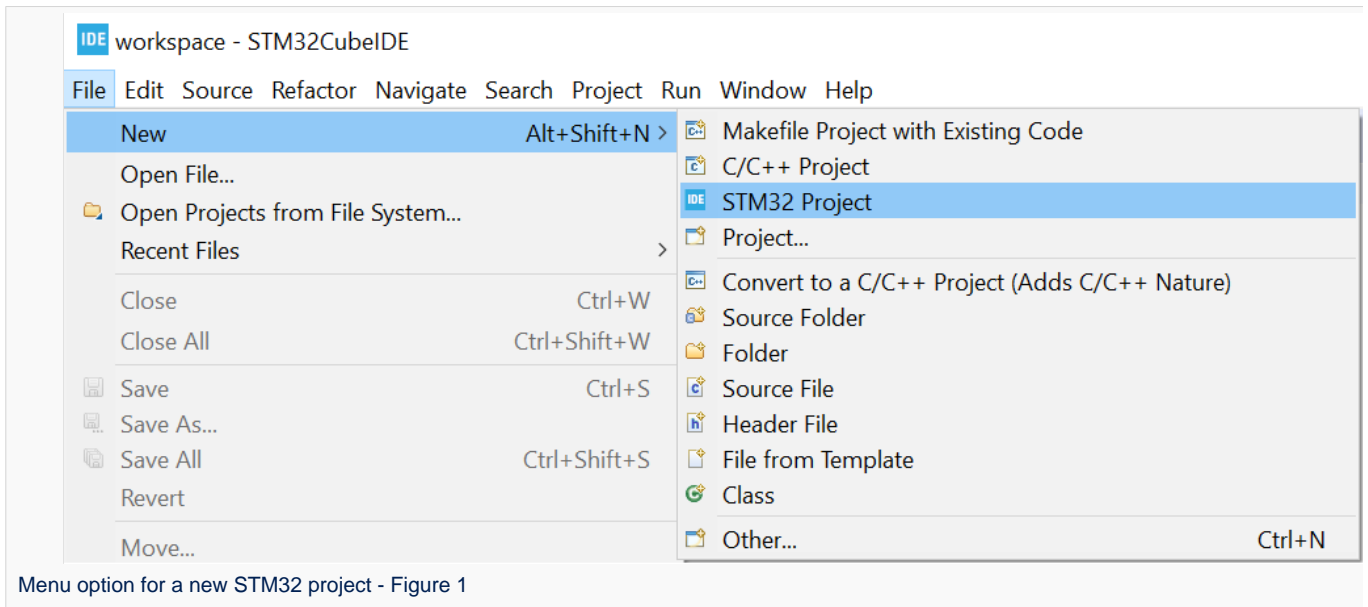
How to get started with STM32CubeIDE from scratch

A quality version of this page, approved on *5 January 2021*, was based off this revision.

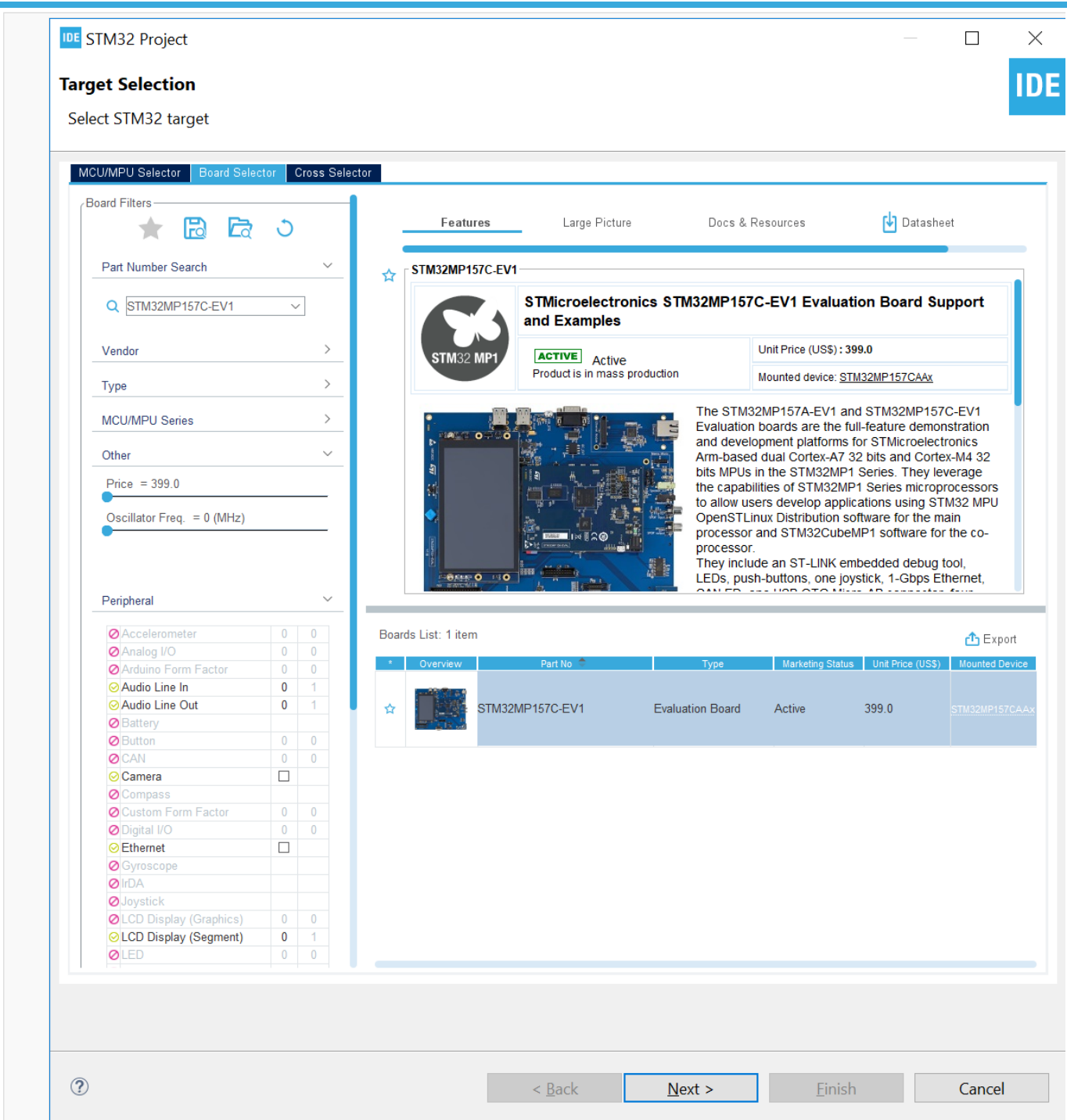


1 Create a new STM32 project

To start a new project, go to **[File]>[New]>[STM32 Project]**.

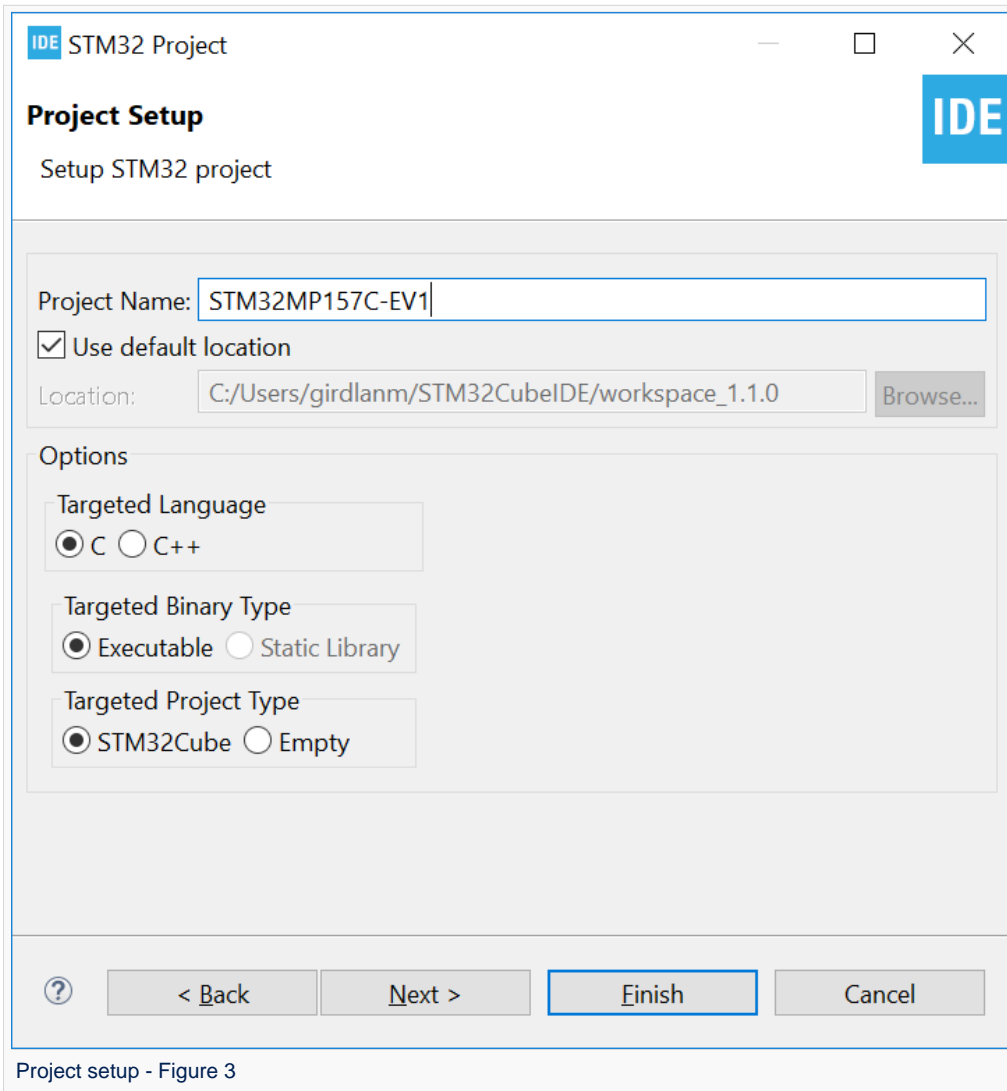


Select the desired STM32 device or board. Demonstrated below, the selected board is the STM32MP157C-EV1. Click on **[Next >]**.



Target selector in STM32CubeIDE - Figure 2

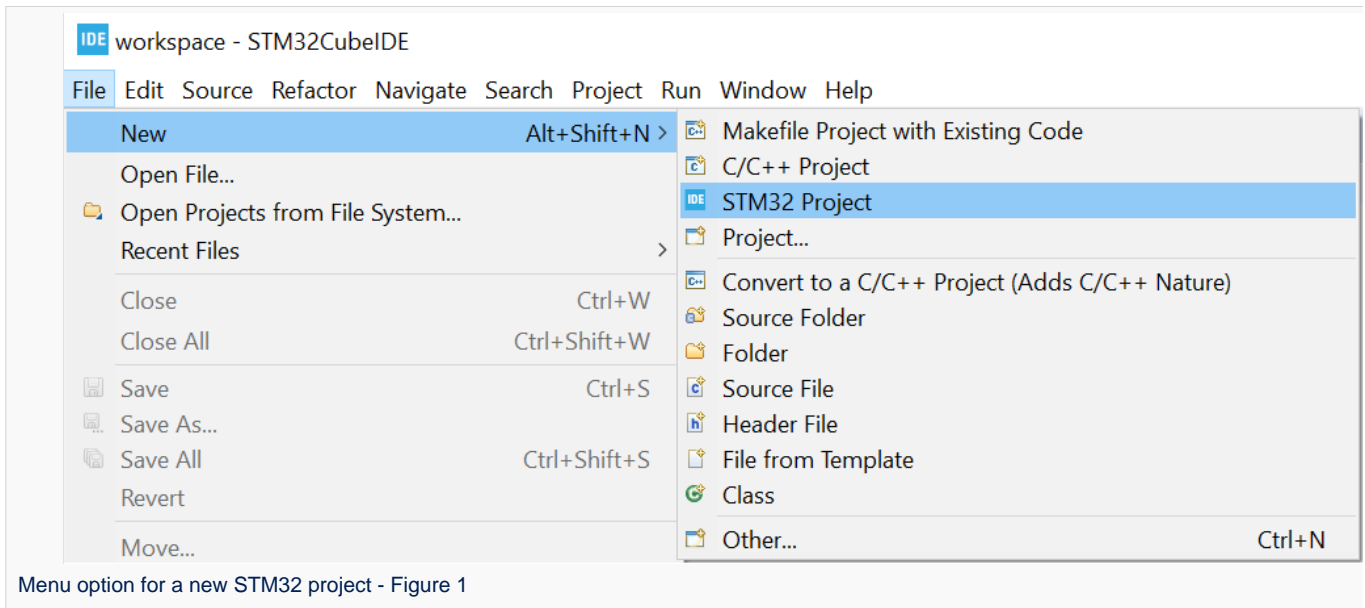
After the target selection, the project setup step shown below has to be done. The *Targeted Project Type* setting determines whether the project gets generated by STM32CubeMX or not. An *empty project* is a skeleton of a project that needs building upon while STM32Cube indicates an STM32CubeMX-managed project.





2 Create an *empty project* based on the template in the STM32CubeMP1 Package

To make sure the project gets a hierarchical structure, the recommended way to is to go to **[File]>[New]>[STM32 Project]** as shown below.



Select the device for the project being imported and click on **[Next >]**.

When setting up the project as shown below, make sure the *Targeted Project Type* is set to *Empty* and click on **[Finish]**.



IDE STM32 Project

Project Setup

Setup STM32 project

Project Name:

Use default location

Location:

Options

Targeted Language

C C++

Targeted Binary Type

Executable Static Library

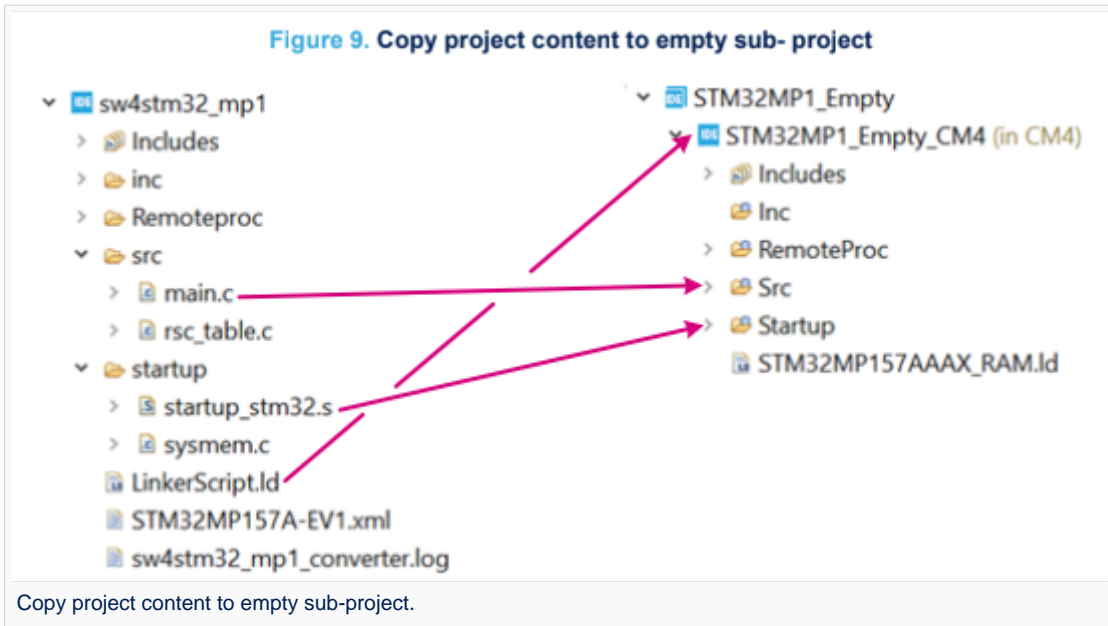
Targeted Project Type

STM32Cube Empty

Project setup with targeted project type selected as empty.

After the empty hierarchical project is generated:

1. Go to **[File]>[Import...]**.
2. Import the template project as *Import ac6 System Workbench for STM32 Project*
3. Copy and paste the project content into the sub-project of the empty project by means of STM32CubeIDE project explorer as shown below



i Information

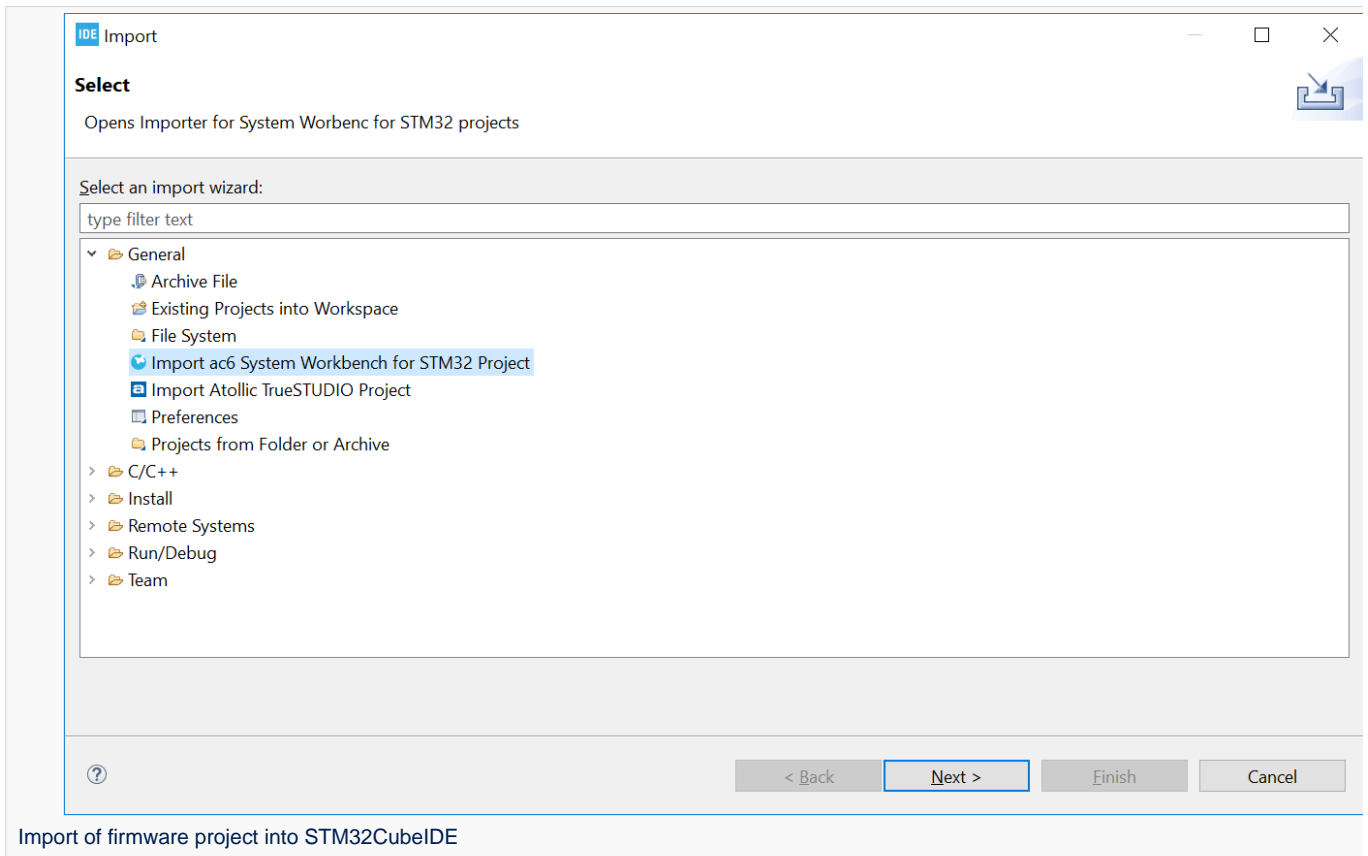
It is not recommended to import the .cproject, .project or .settings files.

It is important to remember to also configure the same build settings that was used previously while the project was in the SW4STM32 environment. If the project contains linked resources those needs to be updates to point to the correct resource in the file system. This process is necessary because when importing a project made for SW4STM32 without any special treatment and that does not have an ioc-file then it will be imported into STM32CubeIDE with a flat project structure.

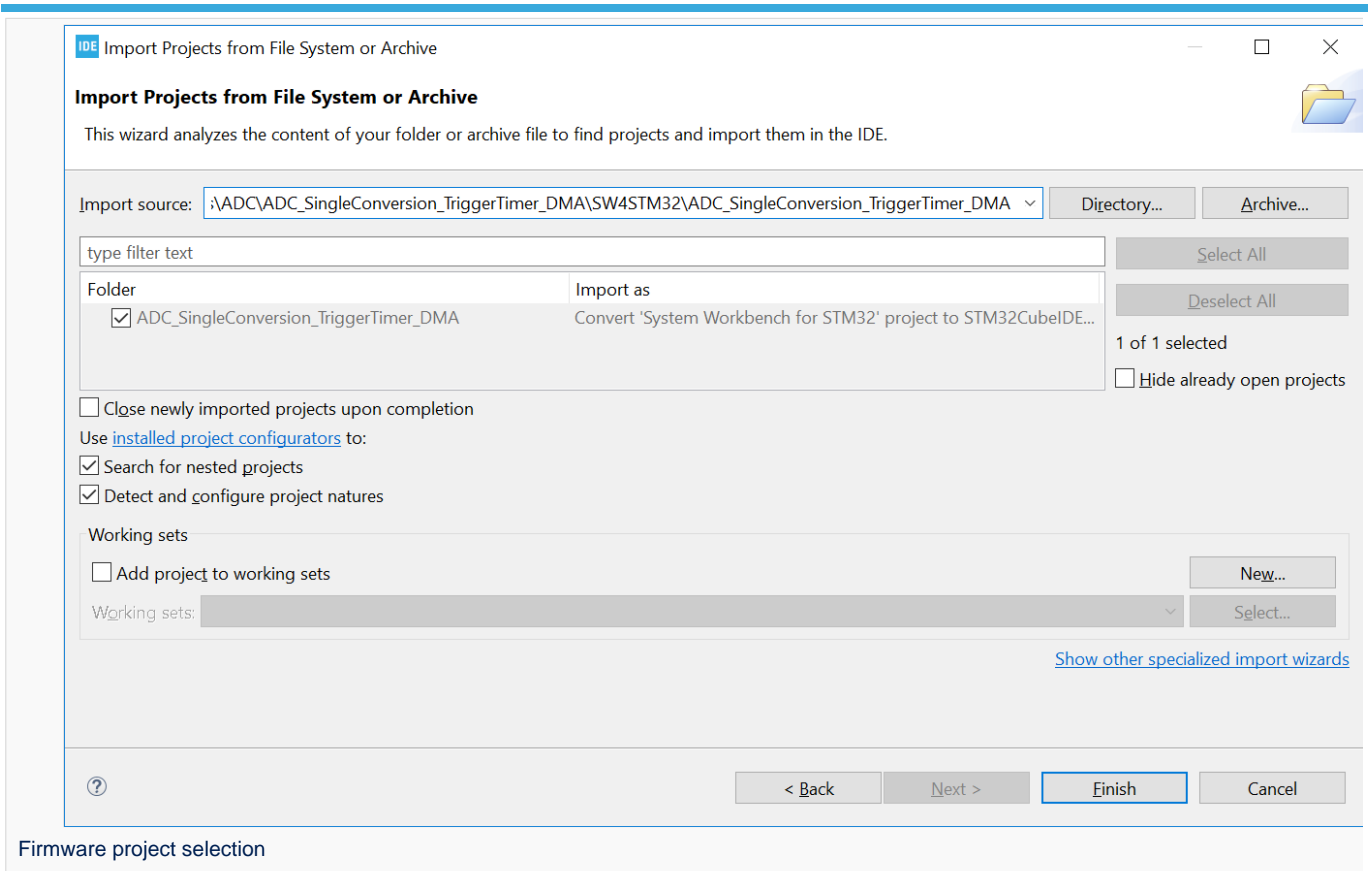


3 Import a project from the STM32CubeMP1 Package

In order to import the STM32Cube firmware project into STM32CubeIDE, go to **[File]>[Import...]** and select Import ac6 System Workbench for STM32 Project as shown in Figure 10 and click on **[Next >]**.



Then select the correct project. A project example is by default located at `$HOME\STM32Cube\Repository\STM32Cube_FW_MP1_VX.X\Projects\STM32MP157C-EV1\Examples\ADC\ADC_SingleConversion_TriggerTimer_DMA\SW4STM32\ADC_SingleConversion_TriggerTimer_DMA.`



Firmware project selection

After selecting the project, click on **[Finish]** to import and build the project.

Analog-to-digital converter. The process of converting a sampled analog signal to a digital code that represents the amplitude of the original signal sample.

Direct Memory Access