



STM32CubeMonitor tool suite overview



Contents

1. STM32CubeMonitor tool suite overview	3
2. STM32CubeMonitor:STM32CubeMonitor overview	3



A quality version of this page, approved on 19 August 2021, was based off this revision.

This section introduces the software tools that are useful for monitoring applications based on STM32 devices. Several tools constitute this asset:

STM32 CubeMonitor

STM32CubeMonitor

Generic software monitoring tool for STM32 devices.

Memory monitoring through SWD, demo panels, RF test panel for STM32WL. Can be customized by customers to build their own monitoring dashboard.

STM32 CubeMonitor-RF

STM32CubeMonitor-RF(www.st.com)

Software tools for testing BLE and 802.15.4 RF performances of STM32WB-based devices.

STM32 CubeMonitor-Power

STM32CubeMonitor-Power(www.st.com)

Graphical tool displaying on a PC power data coming from measurement board.

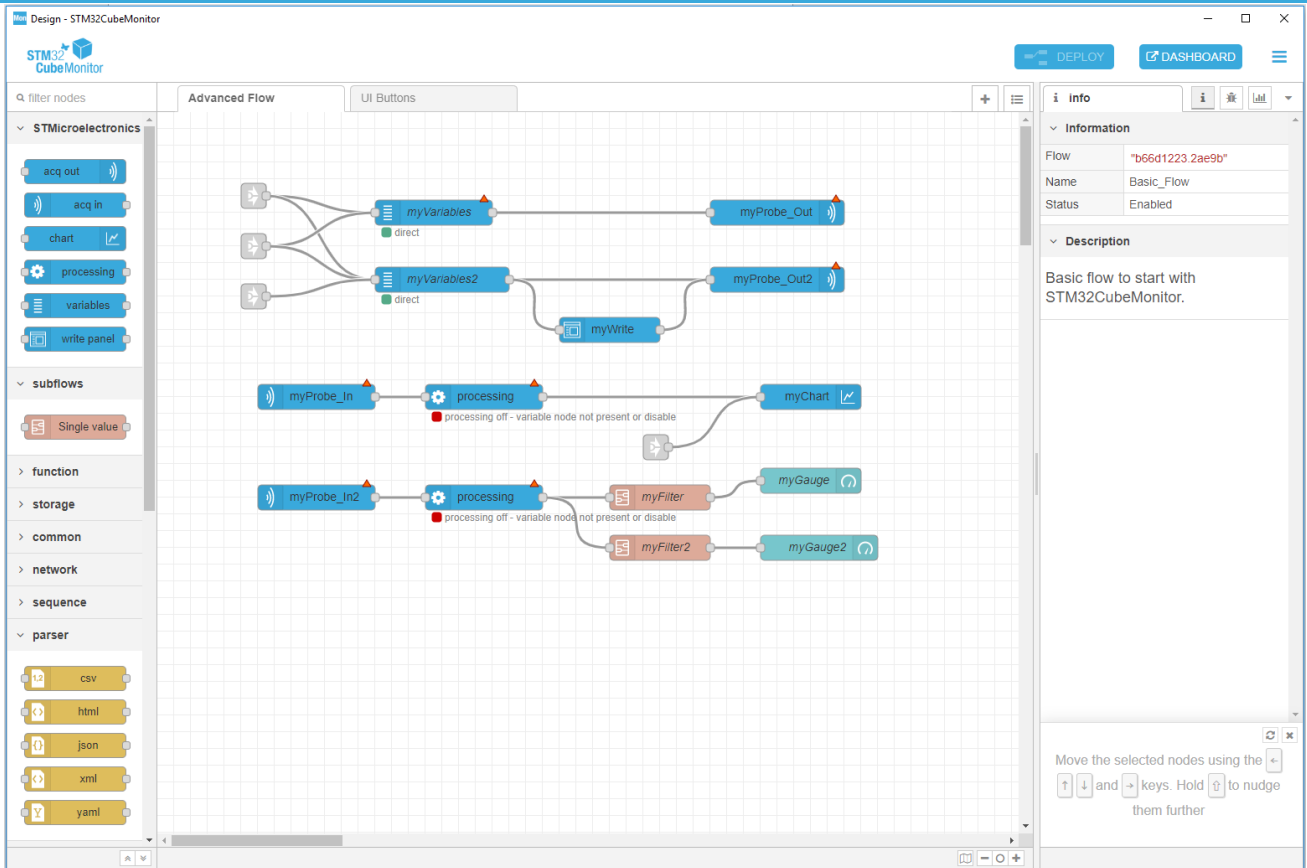
Stable: 20.02.2020 - 16:40 / Revision: 20.02.2020 - 16:39

A quality version of this page, approved on 20 February 2020, was based off this revision.

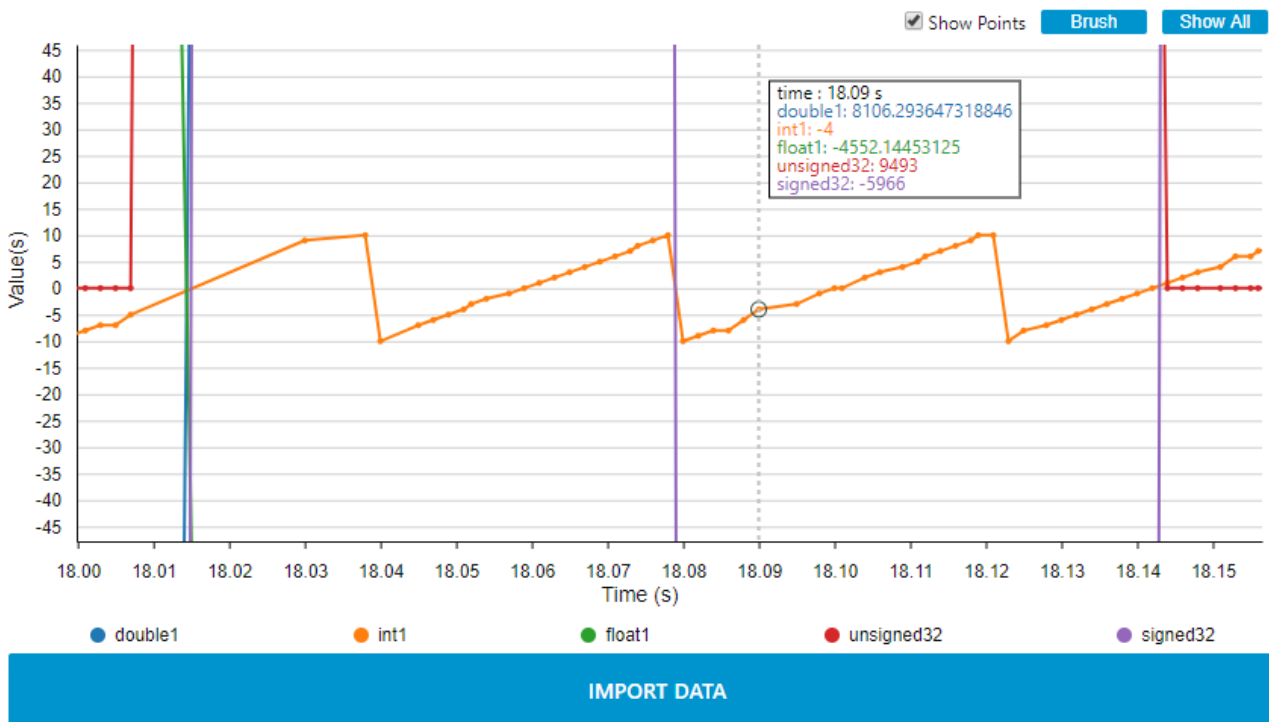
STM32CubeMonitor is a tool that allows real-time sampling and visualization of user variables while the application is running. It runs on Windows, Linux or macOS, and provides a browser-based interface.

The user can define their own flow to monitor variables for their STM32 microcontroller-based application.

Example design and dashboard views are shown below.



Chart



To understand main principles of the tool we recommend to follow this link ---> [Concepts](#)



To install the tool, follow this link --> [Installing STM32CubeMonitor](#)